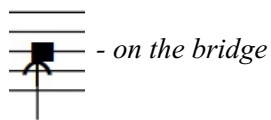


.musica brevis
(2017)

Patrik Kako



- on the bridge



- chop



- tremolo



- Bartók pizzicato



- pizzicato with left hand



- shortest fermata (cca.1-2")



- medium fermata (cca.3")



- longest fermata (cca.5+")



-
0,75



-
0,5



- (natural)
0,25



+
0,25



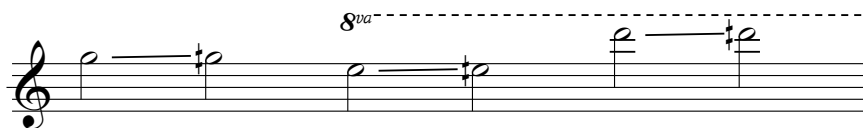
+
0,5



+
0,75

(0,5 = halftone)

Tune up on the piano



.musica brevis

Patrik Kako
(*1998)

$\text{♩} = 56-64$
con sord.
mp
pp
mf
ppp
mp
molto rit.

a tempo
molto sul p. → ord.
pppp
molto sul p. → ord.
arco
fff
fff
ppp
fff
pppp
fff
Red.

molto rit.
a tempo
senza sord.
pizz.
ord.(pizz.)
mp
pp
mp
sf
fff
pp
ff
ppp
Red.

15

senza sord.

arco

ff

sul tasto

mp

fff espress.

pizz.

arco

3

6

ff

fpp

fff 3

ppp

Ped.

19

poco rit.

Andante

mf *pp*

mf *ppp* *pp* *ppp*

mp *mp*

A

pp

3

26

con sord.

mp

3

5

una corda

ppp

Ped.

Ped.

31

mf *p*

Ped.

36

ff *fff* *espress.*

B

Ped.

41

Tempo I.

ppp *ppp* *5*

tre corde

fff

Ped.

6 **molto rit.** **a tempo** con sord. arco

48 **11x** **pizz.** **mp**

ff **C** **8va** **11x mp** **sf** **ppp** **3** **Ped.**

56 **fpp** **mp** **3** **5/16** **mp** **8va** **mp** **7** **8vb** **Ped.**

60 **pizz.** **pp** **mf** **pizz.** **senza sord.** **arco** **pp** **3** **sf** **mp** **Ped.**

senza sord.

62

pp

mp

D

Red.

Detailed description: This system contains measures 62 and 63. The top staff (treble clef) features a melodic line with a fermata over the first measure and a triplet of eighth notes in the second measure. The middle staff (bass clef) has a rhythmic accompaniment with triplets and accents, marked *mp*. The bottom system (grand staff) shows a piano accompaniment with a bass line marked *Red.* and a treble line with a long note in the first measure. A box containing the letter 'D' is placed between the middle and bottom systems.

64

ppp

ppp

pp

mf

Red.

ppp

Detailed description: This system contains measures 64 and 65. The top staff (treble clef) has a melodic line with a triplet of eighth notes in the first measure. The middle staff (bass clef) features a long note with a fermata, marked *ppp*. The bottom system (grand staff) shows a piano accompaniment with a bass line marked *Red.* and a treble line with a long note in the first measure. Dynamics include *ppp*, *pp*, and *mf*.

66

sul pont. → ord.

mp *pppp*

ppp

68

molto sul pont.

pp *pp*

pp *mf* *pp* *mf*

E

70

sul pont.

pp *mf*

72

pp

74

sul pont.

Ped.

77

80

83

pp mf

ord.

pizz.

mf

pp

mp

fff

F

5/16 3/4

87

pp mf

arco

arco

mf ff

pp fff

7

5/16 3/4

90

gliss.

gliss.

mp

Ped.

5/4

93

pp *ppp* *ppp*

Ped. Ped.

97

poco cresc. *poco cresc.*

Ped.

104

f *f* *f*

G

Ped.

108

mp *f*

mp *f*

mp *f*

mp *f*

Red.

111

pp *f*

pp *f*

pp *f*

pp *f*

116

mp *ppp*

mp *ppp*

mp *ppp*

mp *ppp*

Red.

*the approximate duration of the segment

This system contains five staves. The top two staves are for piano, both filled with a dense tremolo texture and marked with *fff*. The third staff is the right-hand organ part, starting with a tremolo and then moving to a melodic line with dynamic markings *<-6''*, *L.H.*, *fff*, and *R.H.* *<-6''*. The fourth staff is the left-hand organ part, featuring a tremolo and then a sustained chord with a *6* fingering. The fifth staff is the pedal part, with a tremolo and then a sustained chord. Pedal markings are present at the bottom.

13" Grave 125

This system contains five staves. The top two staves are for piano, both filled with a dense tremolo texture and marked with *fff*. The third staff is the right-hand organ part, starting with a tremolo and then moving to a melodic line with dynamic markings *pppp* and *fff*. The fourth staff is the left-hand organ part, featuring a tremolo and then a sustained chord with a *6* fingering. The fifth staff is the pedal part, with a tremolo and then a sustained chord. Pedal markings are present at the bottom.

sul pont.

rit.

♩ = 40-48

129

Violin: *ff*, *III*, *IV*, *III*

Piano: *pp*, *mp*, *fff* *3*

Cello: *9va*, *I*

134

Violin: *mf*, *sul pont.*, *mf*, *9*

Piano: *mf*, *sff*, *pppp*, *fff*, *9*

Cello: *9*, *Red.*

142

Violin: *ppp*, *pppp*, *9x*, *ord.*, *4*

Piano: *ppp*, *sul pont.*, *ppp*, *9x*, *4*

Cello: *ppp*, *9x*, *Red.*, *4*

Bottom Cello: *Red.*, *Red.*, *Red.*, *sim.*, *4*

150

*ppp*²

Red.

156

ppp

pppp

sul pont.

3

3

durata 10'